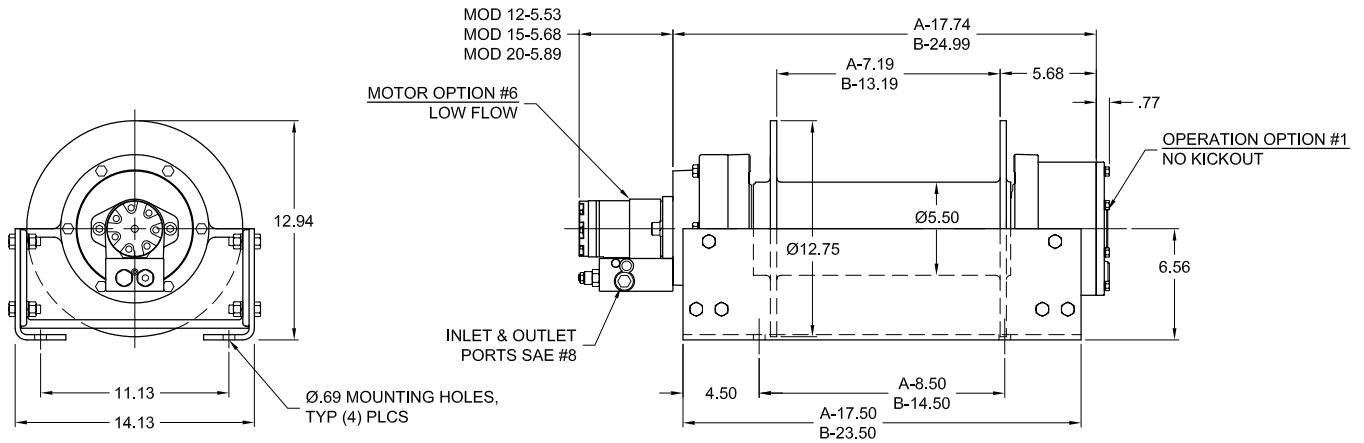




Model 12-15-20

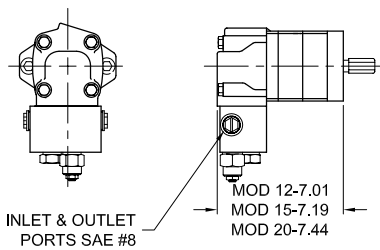
12,000-15,000-20,000 lb.



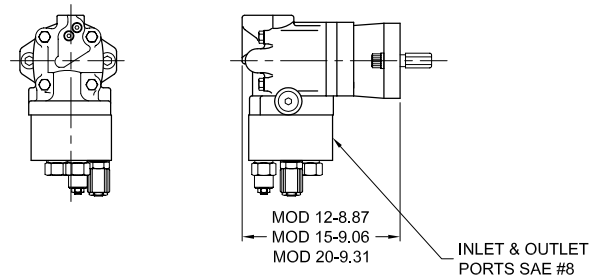
APPROX. WEIGHT: 280 lb.

OPTIONAL FEATURES

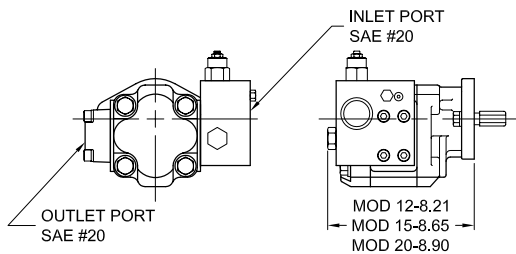
MOTOR OPTION #2
MEDIUM FLOW MOTOR



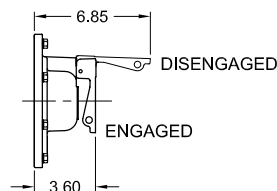
MOTOR OPTION #5
MEDIUM FLOW 2 SPD MOTOR



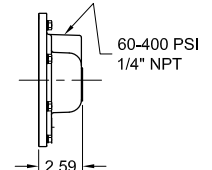
MOTOR OPTION #1
HIGH FLOW MOTOR



OPERATION OPTION #5
MANUAL KICKOUT



OPERATION OPTION #4
AIR/HYDRAULIC KICKOUT



Contact your dp sales representative for additional options and features not shown.

Because of continued product improvement, we reserve the right to make changes without notice.

WARNING **CAUTION**

Winches are not intended to be used for the lifting or moving of persons.

The last 5 wraps cable must be left on the drum to assist the cable clamp in holding the load.

Contact Us Today

TWG Headquarters, 11135 S James Ave
Jenks, OK 74037 USA
(918) 298-8300 | salesinfo@dovertwg.com

Contact Us Today

TWG Canada, 19350 22nd Ave
Surrey, BC V3Z 3S6 CANADA
(604) 547-2100 | salesinfo@dovertwg.com



www.dovertwg.com





Model 12-15-20

12,000-15,000-20,000 lb.

MODEL 12

MOTOR OPTIONS #1, 2, & 6

LAYER	LINE PULL (lbs)	LINE SPEED (fpm)		
		OPTION #1	OPTION #2	OPTION #6
1	12000	116	46	45
2	10300	135	54	52
3	9000	154	61	60
4	8000	173	69	67
5	7200	193	77	75
6	6550	212	84	82
7	6000	231	92	89

Performance is based on 40 gpm @ 2650 psi (option #1), 20 gpm @ 2400 psi (option #2), 20 gpm @ 2400 psi (option #6) with Ø1/2" wire rope.

2 SPEED MOTOR OPTION #5

LAYER	LINE PULL (lbs)		LINE SPEED (fpm)	
	LOW	HIGH	LOW	HIGH
1	12000	6000	35	69
2	10300	5140	40	81
3	9000	4500	46	92
4	8000	4000	52	104
5	7200	36000	58	115
6	6550	3270	63	127
7	6000	3000	69	138

Performance is based on 15 gpm @ 2350 psi with Ø1/2" wire rope.

MODEL 15

MOTOR OPTIONS #1, 2, & 6

LAYER	LINE PULL (lbs)	LINE SPEED (fpm)		
		OPTION #1	OPTION #2	OPTION #6
1	15000	110	48	36
2	12700	131	57	42
3	10900	151	66	49
4	9640	172	75	56
5	8610	192	84	62
6	7780	213	93	69

Performance is based on 50 gpm @ 2700 psi (option #1), 25 gpm @ 2500 psi (option #2), 20 gpm @ 2450 psi (option #6), with Ø9/16" wire rope.

2 SPEED MOTOR OPTION #5

LAYER	LINE PULL (lbs)		LINE SPEED (fpm)	
	LOW	HIGH	LOW	HIGH
1	15000	7500	38	76
2	12700	6330	45	90
3	10900	5470	52	104
4	9640	4820	59	118
5	8610	4300	66	132
6	7780	3890	73	146

Performance is based on 20 gpm @ 2400 psi with Ø9/16" wire rope.

MODEL 20

MOTOR OPTIONS #1, 2, & 6

LAYER	LINE PULL (lbs)	LINE SPEED (fpm)		
		OPTION #1	OPTION #2	OPTION #6
1	20000	107	37	29
2	16600	128	45	35
3	14200	150	52	41
4	12400	172	60	46
5	11000	193	67	52

Performance is based on 60 gpm @ 3000 psi (option #1), 25 gpm @ 2500 psi (option #2), 20 gpm @ 2600 psi (option #6), with Ø5/8" wire rope.

2 SPEED MOTOR OPTION #5

LAYER	LINE PULL (lbs)		LINE SPEED (fpm)	
	LOW	HIGH	LOW	HIGH
1	20000	10000	36	71
2	16600	8310	43	86
3	14200	7100	50	100
4	12400	6200	57	115
5	11000	5510	65	129

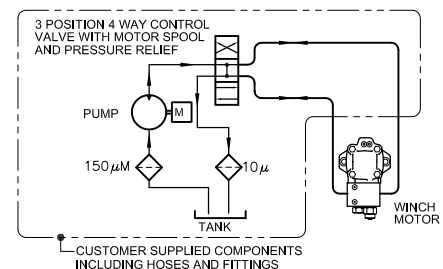
Performance is based on 24 gpm @ 2500 psi with Ø5/8" wire rope.

DRUM CAPACITIES - FT.

LAYER	Ø1/2" WIRE ROPE		Ø9/16" WIRE ROPE		Ø5/8" WIRE ROPE	
	A	B	A	B	A	B
1	20	37	18	33	17	30
2	44	81	40	73	37	67
3	71	131	65	119	60	110
4	102	186	93	171	87	159
5	135	249	125	230	117	214
6	173	317	160*	294*	-	-
7	213*	392*	-	-	-	-

Drum capacities are in accordance with SAE J706. Actual capacities are usually up to 10% greater than those shown. * Layer does not meet SAE J706.

TYPICAL HYDRAULIC SYSTEM



The rated line pulls are for the winch only. Consult the wire rope manufacturer for wire rope ratings.

Because of continued product improvement, we reserve the right to make changes without notice.

⚠ WARNING	⚠ CAUTION
Winches are not intended to be used for the lifting or moving of persons.	The last 5 wraps cable must be left on the drum to assist the cable clamp in holding the load.

Contact Us Today

TWG Headquarters, 11135 S James Ave
Jenks, OK 74037 USA
(918) 298-8300 | salesinfo@dovertwg.com

Contact Us Today

TWG Canada, 19350 22nd Ave
Surrey, BC V3Z 3S6 CANADA
(604) 547-2100 | salesinfo@dovertwg.com

